



WHATCHAT3

WHATCHAT3 WHITE
// PAPER

WHATCHAT3 X AI

A GLOBAL AI PLATFORM FOR TRANSFORMATIVE INTELLIGENT SOLUTIONS

UNLEASHING THE POWER OF AI FOR BUSINESSES AND
INDIVIDUALS



CONTACT INFORMATION



<https://whatchat3.com>



contact@whatchat3.com



Company headquarters address

Date

SEPTEMBER 2024

Company

WHATCHAT3 AI



INTRODUCTION

× WHATCHAT3 AI OVERVIEW

- Whatchat3 AI is a pioneering platform that integrates advanced AI technologies to deliver intelligent, customized solutions for businesses and individuals.
- By leveraging machine learning, deep data analytics, and automation, Whatchat3 helps users optimize operations and drive innovation, making it a significant player in the global AI space.



× VISION AND MISSION

- Our vision is to deliver scalable intelligent solutions that drive efficiency and growth, leading the global AI revolution. Whatchat3's mission is to continuously innovate and provide businesses of all sizes with powerful AI tools to enhance decision making and operational performance.



WHATCHAT3'S ROLE IN THE GLOBAL AI REVOLUTION

As AI transforms industries across the globe, Whatchat3 is at the forefront of helping businesses leverage the full potential of AI to stay competitive in an increasingly data-driven world.





MARKET PATTERN

GLOBAL ARTIFICIAL INTELLIGENCE DEVELOPMENT TREND

- Artificial intelligence (AI) is driving innovation across industries across the globe and is rapidly being applied in areas such as automation, data analytics, and decision making.
- The AI market is growing rapidly as businesses increasingly rely on AI to improve efficiency and uncover new opportunities.



THE DEMAND FOR AI COMPUTING POWER IS GROWING

- As the application of artificial intelligence expands, the demand for computing power also surges.
- Training advanced AI models such as deep learning networks requires significant resources, and companies are investing heavily in high-performance computing to meet these needs.





MARKET PATTERN

WHATCHAT3 AI SEEKS TO FILL A GAP IN THE CURRENT MARKET



- Many businesses face challenges in acquiring the computing power needed to run AI models.
- Whatchat3 AI fills this gap by providing a scalable and affordable platform that provides the necessary infrastructure for AI development and makes it easier for companies of all sizes to use AI.



INDUSTRIES AFFECTED BY ARTIFICIAL INTELLIGENCE

Ai is transforming the following industries:



FINANCE

Enhanced fraud detection, risk management and customer service.



HEALTHCARE

Improving diagnosis, treatment planning, and patient care.



EDUCATION

Provides personalized learning and automated management tasks.



WHATCHAT3 AI PLATFORM OVERVIEW



WHATCHAT3 AI COMPREHENSIVE INTRODUCTION

Whatchat3 AI is a comprehensive platform that integrates multiple advanced AI technologies to provide intelligent solutions for businesses and individuals.



WHATCHAT3 AI 

It is designed to help users optimize processes, enhance decision-making and drive innovation through AI-powered tools.





WHATCHAT3 AI PLATFORM OVERVIEW

KEY TECHNOLOGY INNOVATION



NATURAL LANGUAGE PROCESSING (NLP)

enables machines to understand and process human language for applications such as chatbots and language translation.



COMPUTER VISION

for image and video recognition, object detection, and facial recognition to improve accuracy in industries such as security and healthcare.



GENERATIVE ADVERSARIAL NETWORKS (GANs)

Generate realistic images and video, widely used for content creation and simulation.



PREDICTIVE MODELS

Help businesses predict trends and outcomes to improve decision-making in areas such as finance and retail.



AUTOMATED DECISION MAKING

Provides data-driven insights and advice to help businesses navigate complex decision scenarios.

PLATFORM FEATURES AND BENEFITS



FOR THE ENTERPRISE

Scalable AI solutions, cost-effective, and customizable tools to empower decision making and streamline operations.



FOR INDIVIDUALS

Provide easy-to-use AI tools that give non-technical users access to advanced AI capabilities for personal projects or small businesses.



THE POWER OF AI COMPUTING INVESTMENT

WHAT IS AI COMPUTING POWER?

- AI computing power refers to the processing power required to run and train AI models. It is essential for processing the large data sets and complex algorithms that drive AI applications.
- As AI models, especially deep learning networks, become more complex, the need for more powerful computing power also increases significantly.



THE ROLE OF COMPUTING IN ARTIFICIAL INTELLIGENCE MODEL TRAINING

- Computation is crucial for training AI models. It allows algorithms to process data, identify patterns, and improve their accuracy.
- The faster and more powerful the computational resources, the faster the AI models can be trained and deployed. In industries that require rapid iteration and high precision, having enough computing power ensures that AI models perform at their best without long delays in training time.





THE POWER OF AI COMPUTING INVESTMENT

INVESTMENT OPPORTUNITIES IN AI COMPUTING POWER



As the global demand for artificial intelligence continues to grow, investing in computing power has brought rich returns.

AI applications in areas such as finance, healthcare, and education are driving the need for more robust infrastructure.

Whatchat3 AI allows investors to directly invest in the computing resources needed for AI model training and provide returns based on the calculations they provide.

This allows investors to tap into the rapidly expanding AI market without developing their own AI solutions.

WHATCHAT3 AI



Scalability and future prospects for AI investments

Investment in AI computing power is highly scalable. As AI grows in popularity, so will the need for more advanced computing power, ensuring continued growth in demand. As the industry increasingly relies on AI for automation, decision making, and innovation, investing in AI computing has strong growth potential.





AI COMPUTING POWER INVESTMENT MODEL



Whatchat3 AI's investment model is divided into eight levels (P1–P8), each offering different investment amounts, returns, and eligibility requirements. As investors move up the ladder, they will receive higher returns as well as potential gains from team-based passive income.

| | | | |
|---|--|---|--|
|  P1 | Investment amount: 50–300 euros |  P5 | Investment amount: 2000–8000 euros |
| | Expected return: 1.5–1.8% | | Expected return: 3.1–3.4% |
| | Eligibility: No direct membership required | | Eligibility: 3 direct P4 members must be recruited |
|  P2 | Investment amount: 200–1000 euros |  P6 | Investment amount: 4,000–16,000 euros |
| | Expected revenue: 1.9%–2.2% | | Expected return: 3.5–3.8% |
| | Eligibility: 3 direct P1 members must be recruited | | Eligibility: 3 direct P5 members must be recruited |
|  P3 | Investment amount: 500–2000 euros |  P7 | Investment amount: 8000–32,000 euros |
| | Expected revenue: 2.3–2.6% | | Expected revenue: 3.9%–4.2% |
| | Eligibility: 3 direct P2 members must be recruited | | Eligibility: 3 direct P6 members must be recruited |
|  P4 | Investment amount: 1000–4000 euros |  P8 | Investment amount: 16,000–64,000 euros |
| | Expected return: 2.7%–3.0% | | Expected return: 4.3%–4.6% |
| | Eligibility: 3 direct P3 members must be recruited | | Eligibility: 3 direct P7 members must be recruited |



AI COMPUTING POWER INVESTMENT MODEL

Team expansion and revenue examples



By forming a team, investors
can increase their returns
through direct returns and team
commissions. Here are
examples of potential gains
based on team growth:

Level 1 Team (P1)

1

1000 members with an investment of 300 euros per person

| | |
|-------------------------|--|
| Total investment | $1000 * 300 \text{ euros} = 300,000 \text{ euros}$ |
| investment income(1.8%) | $\text{€}300,000 * 1.8\% = \text{€}5,400$ |
| Team benefits (12%) | $5400 * 0.12 = \text{€}648$ |

Level 2 Team (P2)

2

500 members with an investment of 300 euros each

| | |
|-------------------------|---|
| Total investment | $500 * 300 \text{ euros} = 150,000 \text{ euros}$ |
| investment income(1.8%) | $\text{€}150,000 * 1.8\% = \text{€}2,700$ |
| Team benefits (5%) | $2700 * 0.05 = \text{€}135$ |

Level 3 Team (P3)

3

300 members with an investment of 300 euros each

| | |
|-------------------------|--|
| Total investment | $300 * 300 \text{ euros} = 90,000 \text{ euros}$ |
| investment income(1.8%) | $\text{€}90,000 * 1.8\% = \text{€}1,620$ |
| Team benefits (3%) | $1620 * 0.03 = \text{€}48.6$ |

Total income

$\text{€}648 + \text{€}135 + \text{€}48.6 = \text{€}831.6$



AI COMPUTING POWER INVESTMENT MODEL

DIRECT AND PASSIVE INCOME OPPORTUNITIES

Whatchat3 AI's model offers investors two kinds of returns:



DIRECT INCOME

Investors receive a return based on their personal investment in computing power.



PASSIVE INCOME

By building a direct member team, investors can earn commissions on the team's investments and create a passive income stream as the team expands.

INCENTIVE STRUCTURE AND EXTENDED REWARDS

Whatchat3 encourages team growth by offering rewards at every level. To be promoted to each level (P1–P8), investors must recruit direct members who are also promoted. This structure rewards both individual investment and the ability to build successful teams. The higher the level, the more attractive the returns and potential passive income through team commissions.

HOW DOES WHATCHAT3 FACILITATE AI INFRASTRUCTURE INVESTMENT

Whatchat3 AI provides an easy-to-access platform for investors to contribute to an AI computing power infrastructure. By pooling resources into a global AI computing network, investors can support the growth of AI applications without having to manage complex hardware or technical setups. This model makes investing in AI infrastructure simple, scalable, and rewarding.



TEAM STRUCTURE AND REFERRAL PROGRAM

WHATCHAT3: PIONEERING ADAPTIVE AI SOLUTIONS

Whatchat3 redefines AI with its adaptive architecture that combines deep learning and symbolic AI. This allows the platform to dynamically adjust its algorithms to fit the specific needs of industries like finance, healthcare, and retail. Unlike static systems, Whatchat3 offers real-time learning and model optimization through its Integrated Learning System (WILS), which ensures AI models evolve continuously without manual updates.



A key differentiator is Whatchat3's focus on scalability and sustainability. Our AI models are built to handle growing datasets with minimal computational load, and we prioritize energy-efficient AI to reduce environmental impact during operations.



By offering AI solutions that are adaptable, scalable, and sustainable, Whatchat3 empowers businesses to achieve superior efficiency and remain ahead of the competition.



TECHNICAL ARCHITECTURE



AN OVERVIEW OF WHATCHAT3'S UNDERLYING TECHNOLOGY



Whatchat3 AI is built on a scalable cloud infrastructure that gives users access to advanced AI tools without expensive hardware.

This flexible architecture ensures that the platform can efficiently handle large-scale AI model training and deployment.



CLOUD INFRASTRUCTURE AND ARTIFICIAL INTELLIGENCE MODELS



Whatchat3's cloud system supports AI models such as NLP, computer vision, GAN, and predictive analytics.

The infrastructure is designed to provide the necessary computing power to enable users to scale their AI solutions quickly and efficiently.





TECHNICAL ARCHITECTURE



SECURITY PROTOCOLS AND DATA PROTECTION



Whatchat3 implements key security measures such as end-to-end encryption and strict access controls to keep user data safe. The platform complies with global data regulations, giving businesses and individuals peace of mind when it comes to data privacy.



TRAIN AND DEPLOY AI MODELS

Whatchat3 simplifies the AI model development process:



DATA UPLOAD

Users upload data to the platform.



MODEL TRAINING

Use the computing power of the cloud for model training.



DEPLOYMENT

After optimization, the model can be quickly deployed and seamlessly integrated into the business workflow.



THE ROLE OF BLOCKCHAIN AND CRYPTOCURRENCIES



BLOCKCHAIN INTEGRATION IN WHATCHAT3



Whatchat3 uses blockchain technology to ensure that transactions are secure and transparent. The decentralized system of blockchain provides a reliable way to track investments and prevent tampering or fraud, thus providing a more secure environment for users.



THE USE OF CRYPTOCURRENCIES

Whatchat3 supports investments and withdrawals using cryptocurrencies such as USDT, SOL and USDC. These options offer faster, more convenient and more cost effective transactions than traditional banks.



ADVANTAGES OF BLOCKCHAIN



01.

TRANSPARENCY

All transactions are recorded on the public ledger, ensuring accountability is clear.

02.

SECURITY

Blockchain's decentralized cryptographic structure prevents fraud.

03.

EFFICIENCY

Transactions are faster and cheaper, especially for international users.

The integration of blockchain and cryptocurrency enhances the security of the Whatchat3 platform and makes transactions more transparent and efficient.

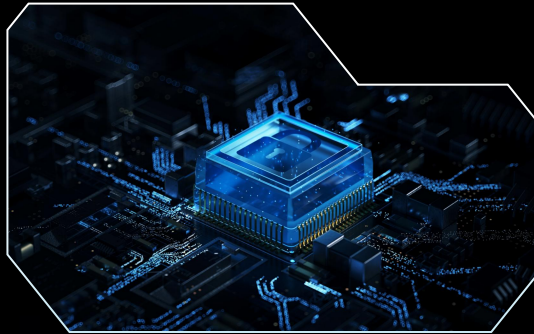


SUSTAINABILITY AND ENVIRONMENTAL RESPONSIBILITY



GREEN ENERGY AND LOW ENERGY AI COMPUTING CENTER

Whatchat3 leverages renewable energy and low-energy AI computing centers to reduce its environmental impact and focus on energy efficiency across all operations.



COMMITTED TO ENVIRONMENTALLY FRIENDLY ARTIFICIAL INTELLIGENCE

Whatchat3 is committed to developing powerful and environmentally responsible AI innovations that balance high computing demands with sustainability.



LONG-TERM VISION

Whatchat3's goal is to lead the way in creating AI solutions that contribute to technological advancement and environmental protection.





ROADMAP AND FUTURE DEVELOPMENT

IMPORTANT MILESTONE

2022

Platform development and release.

2024

Expand investment options for AI computing power.

Convergence of artificial intelligence technologies such as NLP and computer vision.

2023

FUTURE ENHANCEMENTS



NEW AI TECHNOLOGIES

Continuous integration of advanced AI tools.



EXPANDED INVESTMENT OPPORTUNITIES

more investment layers and returns.



GLOBAL EXPANSION

Bringing Whatchat3 to more countries and markets.

FUTURE ENHANCEMENTS



Whatchat3 is committed to growing its global community with the aim of driving technological innovation and financial success.





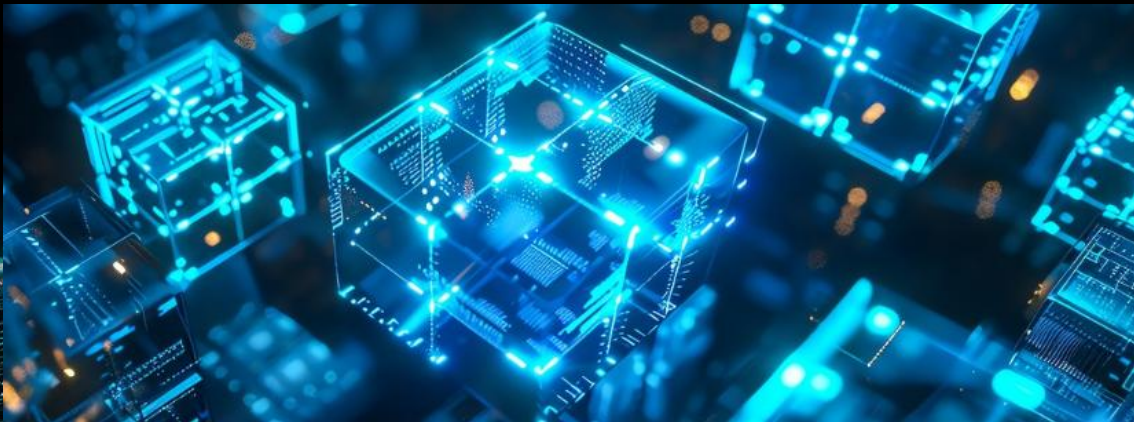
CONCLUSION



INVESTMENT OPPORTUNITIES IN AI COMPUTING POWER



Investing in AI computing power through Whatchat3 brings many benefits, including access to cutting-edge AI technologies, scalable investment opportunities, and the potential for direct and passive income. By joining Whatchat3, investors can tap into the rapidly growing AI market and contribute to the development of global AI infrastructure.



- We encourage investors and technology enthusiasts to take immediate action to take advantage of the platform's powerful tools and opportunities to become part of the AI revolution.“
- As AI continues to transform the industry, Whatchat3 is expected to play an important role in shaping the future of the industry. Through innovation and a commitment to sustainability, Whatchat3 is leading the way in making AI available and profitable for all.



COMPANY INFORMATION



COMPANY NAME

WhatChat3



LEGAL PERSON

dhruba jyoti dashupta



REGISTERED CAPITAL

50 Million Pounds



REGISTERED ADDRESS

London, UK

BUSINESS SCOPE

64303

Activities of venture capital and development investment companies

64304

Open Investment Company activities

63110

Data processing, hosting and related activities

62012

Commercial and domestic software development

WHATCHAT3 X AI



COMPANY INFORMATION



CERTIFICATE OF INCORPORATION OF A PRIVATE LIMITED COMPANY

Company Number **15925747**

The Registrar of Companies for England and Wales, hereby certifies that
WHATCHAT3 CO., LTD

is this day incorporated under the Companies Act 2006 as a private company, that the
company is limited by shares, and the situation of its registered office is in England
and Wales.

Given at Companies House, Cardiff, on **30th August 2024**.

The above information was communicated by electronic means and authenticated by the
Registrar of Companies under section 1115 of the Companies Act 2006

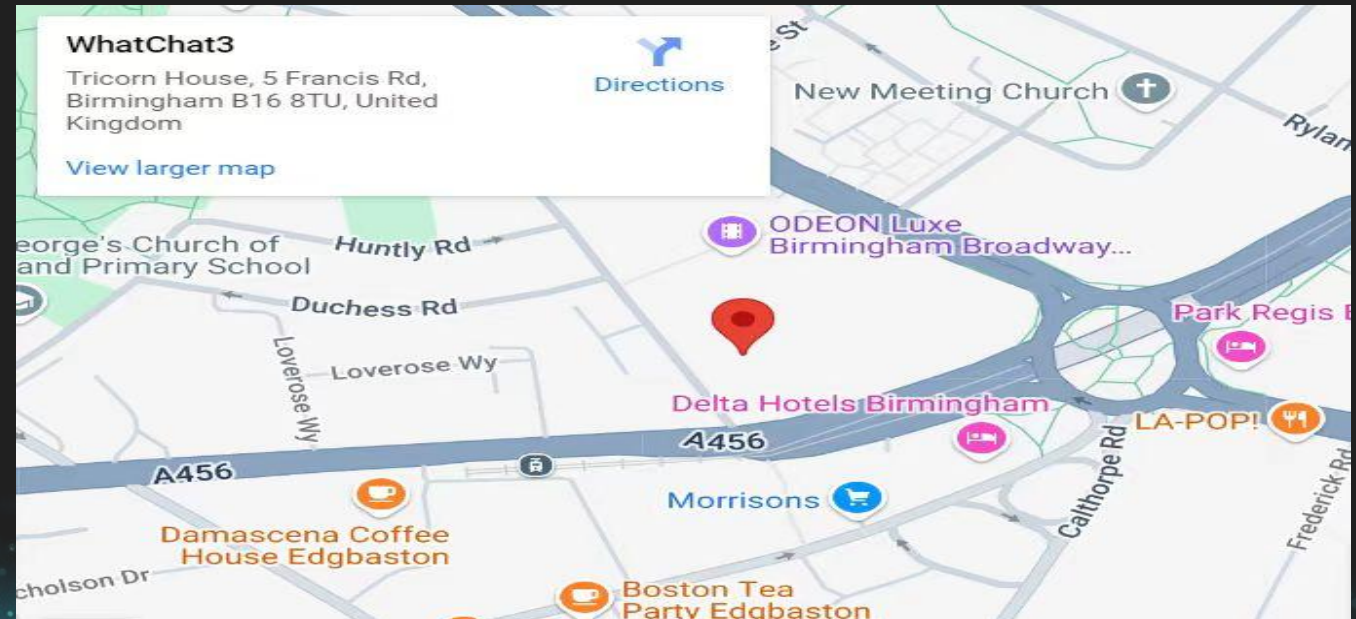
 Companies House



CERTIFICATE QUERY WEBSITE



<https://find-and-update.company-information.service.gov.uk/company/>



Company address: 5 Francis Rd, Birmingham B16 8QG, United Kingdom